



# Education Endowment Fund Research



## Speech and Language Development



Strong speech and language skills are the foundation for children's learning, wellbeing and life chances.

EEF research shows that effective support can make a real difference – especially for children from socio-economically disadvantaged backgrounds.



### what the research shows



High-quality speech and language interventions can add up to **4 months'** additional progress on average.



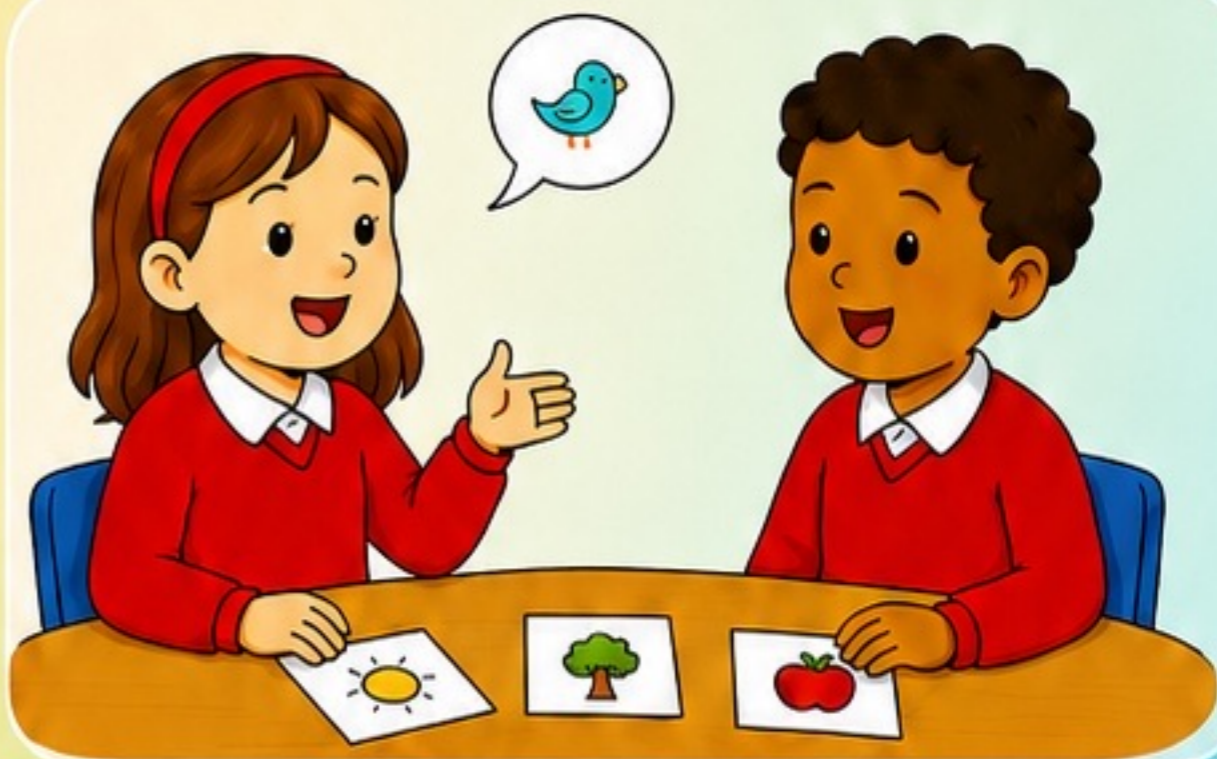
Universal approaches – supporting all children's communication – are important, but **targeted support** for those who need it most has the biggest impact.



Effective approaches include **small group** interventions, **1:1 support** and **training** for early years practitioners.



**Early intervention** (the earlier the better!) leads to stronger outcomes.



### what works?

- ✓ Well-trained staff who model and build language every day
- ✓ Lots of rich talk, stories and back-and-forth conversations
- ✓ Small group or 1:1 language support
- ✓ Working closely with families
- ✓ Monitoring progress and adapting support



### what this means for practice



Make communication a daily priority



Provide targeted support for those who need it



Involve families as partners in progress

### ★ the big picture

Investing in speech and language development helps children to:

- learn
- make friends
- build confidence
- thrive in school and life

**It's never too early to talk, listen and make a difference.**



## Together, we can give every child the best start in life

Quality speech and language support today builds brighter futures for tomorrow.



**i** Want to find out more?

→ Explore the EEF EYES Evidence Tool: Teaching and Modelling Vocabulary

→ [educationendowmentfoundation.org.uk/early-years/evidence-store/communication-and-language-modelling-vocabulary](https://educationendowmentfoundation.org.uk/early-years/evidence-store/communication-and-language-modelling-vocabulary)